

emr

Emerson Electric Co

Country United States of America
 Exchange NEW YORK STOCK EXCHANGE, INC.
 Industry Machinery, Tools, Heavy Vehicles, Trains & Ships
 Sector Industrials

Market Cap Currency USD

General Information (Currency: USD)

Price (Previous Close):	113.27	Beta 5 Year (S&P 500 Index)	1.37
Price - 52 Week High:	114.11	Dividend Yield (Indicated):	1.9%
Price - % Below High:	-0.7%	Shares Outstanding (MIL):	572
Price - 52 Week Low:	76.94	Float Shares (MIL):	570
Price - % Above Low:	47.2%	Float % of O/S:	99.6%
Median Price Target:	120.00	Market Capitalization (MIL):	64,756
Implied Profit:	5.9%	Enterprise Value (MIL):	79,420

Consensus Recommendation**BUY**

# of Analysts:	25
Upgrades Last 30 Days:	4
Downgrades Last 30 Days:	0

Estimates (Currency: USD)

Period	Sales (MIL)			Est. 30 30 Days Ago	EBITDA (MIL)			Est. 30 30 Days Ago	EPS			Est. 30 30 Days Ago
	Mean Est.	High Est.	Low Est.		Mean Est.	High Est.	Low Est.		Mean Est.	High Est.	Low Est.	
FY0 (Actual)	15,165				3,929				4.44			
FY1 (Current Year)	17,590	17,757	17,400	17,608	4,526	5,321	3,956	4,516	5.39	5.47	5.29	5.39
% above/below mean		1.0%	-1.1%	0.1%		17.6%	-12.6%	-0.2%		1.5%	-1.8%	0.0%
FY2 (Next Year)	18,545	18,867	18,176	18,559	4,929	5,452	4,375	4,927	5.86	6.57	4.75	5.82
% above/below mean		1.7%	-2.0%	0.1%		10.6%	-11.2%	0.0%		12.1%	-18.9%	-0.7%

Valuation Ratios

Period	P/E	P/SALES	EV/REVS	EV/EBITDA
LTM (Last Twelve Months)	33.2x	4.1x	5.0x	19.8x
FY1 (Current Year)	21.0x	3.7x	4.5x	17.5x
FY2 (Next Year)	19.3x	3.5x	4.3x	16.1x

FY0 Per Share Metrics (Currency: USD)

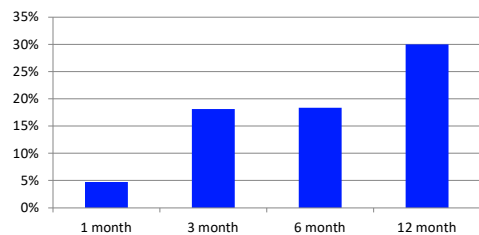
Cash&STInv:	14.08	Sales:	26.27
Total Debt:	14.26	Cash Flow:	5.50
WorkingCap:	15.36	Free CF:	-1.60
Book Value:	36.03	Dividends:	2.08

FY0 Employee Data

# of Emp:	67,000
Emp Grth:	-21.6%
Rev/Emp:	198,885
5 yr Avg:	209,253

Abbreviated Financials (Currency: USD)

Income Statement (MIL)	FY0	FY-1	Balance Sheet (MIL)	FY0	FY-1	Cash Flow Statement (MIL)	FY0	FY-1
Sales	15,165	19,629	Cash & ST Investments	8,051	1,804	Net Income	13,200	3,230
Gross Income	7,427	8,188	Fixed Assets	2,913	3,850	Funds From Operations	1,064	3,433
EBITDA	3,975	4,729	Total Assets	42,746	35,672	Cash From Operations	637	2,922
EBIT	2,924	3,690	Current Liabilities	5,032	7,777	Capital Expenditures	-363	-531
Pretax Income	2,726	4,085	LT Debt	7,610	8,259	Cash From Investments	12,415	-5,334
Net Income	13,219	3,231	Total Liabilities	22,057	25,308	Cash Dividends Paid	-1,198	-1,223
Common Shares	572	591	Total Shareholders Equity	20,689	10,364	Cash From Financing	-6,823	2,048

Review of Stock Performance**Profitability**

	FY0	5 Year Avg
Gross Margin	49.0%	43.1%
R/D % Sales		
SGA % Sales	28%	24%
EBITDA Margin	26.2%	23.3%
Operating Margin	17.9%	17.1%
Pretax Margin	18.0%	16.9%
Net Margin	14.2%	13.6%
CF/Sales	21%	19%
Tax Rate	22.0%	20%
ROA	5.4%	8.9%
ROE	13.8%	24.3%

FY0 Sales By Region

Region	Sales
Americas	7,808
Europe	2,831
Asia, Middle East & Africa	4,597
Segment Total	15,236
Consolidated Total	15,236

Price Chart (Currency: USD)